



2025

SERIES LINEa3

TECHNICAL BULLETIN



LINEa3

MINI

PERFORMANCE VALUES

Linea Mini laboratory tests.

- 11/16" Tempered SG Laminated Glass
- Fastening to adjoining structure excluded

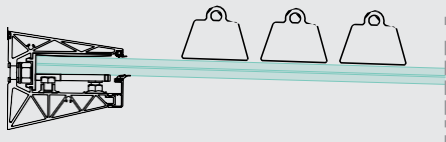
GLASS SIZE	SNOW LOAD lbs / sq. ft.	WIND LOAD lbs / sq. ft.	PULL-OUT lbs
39 3/8" x 39 3/8"	204	112	551
39 3/8" x 47 1/4"	122	71	551

1.

SNOW LOAD CAPACITY:

up to
204 lbs. / sq. ft.

The snow load test is used to assess the capacity of the canopy in the event of forces from above and consists of placing a uniform weight on top of the glass pane to calculate the maximum strength.

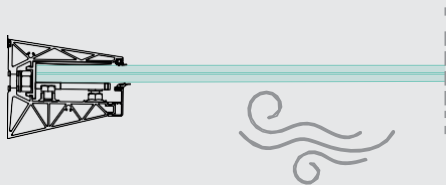


2.

WIND LOAD CAPACITY:

up to
112 lbs. / sq. ft.

The wind load test is used to calculate the strength of the canopy in the event of forces from below. To simulate this, the profile is installed upside down and the weight is placed on top of the pane.

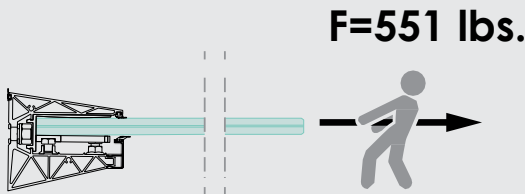


3.

PULL-OUT CAPACITY:

up to
551 lbs.

The pull-out load test is used to assess the strength of the internal accessory holding the glass firmly within the profile. To quantify the strength, a tensile force is applied outwards.



LINEA3

MAXI

PERFORMANCE VALUES

Linea Maxi laboratory tests.

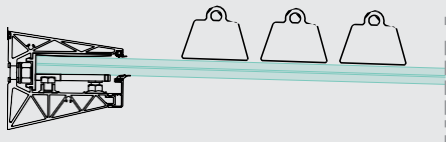
- Tempered SG Laminated Glass
- Fastening to adjoining structure excluded

GLASS THICKNESS & SIZE	SNOW LOAD lbs / sq. ft.	WIND LOAD lbs / sq. ft.	PULL-OUT lbs
3/8" + 3/8" (39 3/8 x 47 1/4")	174	92	551
3/8" + 3/8" (39 3/8 x 59 1/16")	143	92	551
1/2" + 1/2" (39 3/8 x 47 1/4")	204	92	551
1/2" + 1/2" (39 3/8 x 59 1/16")	174	81	551
1/2" + 1/2" (39 3/8 x 63")	122	71	551

1. SNOW LOAD CAPACITY:

up to
204 lbs. / sq. ft.

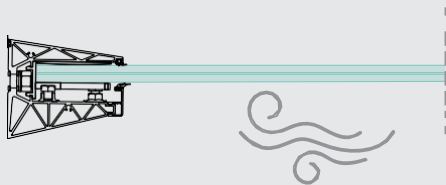
The snow load test is used to assess the capacity of the canopy in the event of forces from above and consists of placing a uniform weight on top of the glass pane to calculate the maximum strength.



2. WIND LOAD CAPACITY:

up to
92 lbs. / sq. ft.

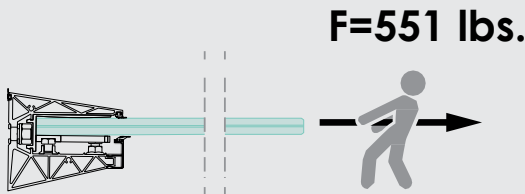
The wind load test is used to calculate the strength of the canopy in the event of forces from below. To simulate this, the profile is installed upside down and the weight is placed on top of the pane.



3. PULL-OUT CAPACITY:

up to
551 lbs.

The pull-out load test is used to assess the strength of the internal accessory holding the glass firmly within the profile. To quantify the strength, a tensile force is applied outwards.



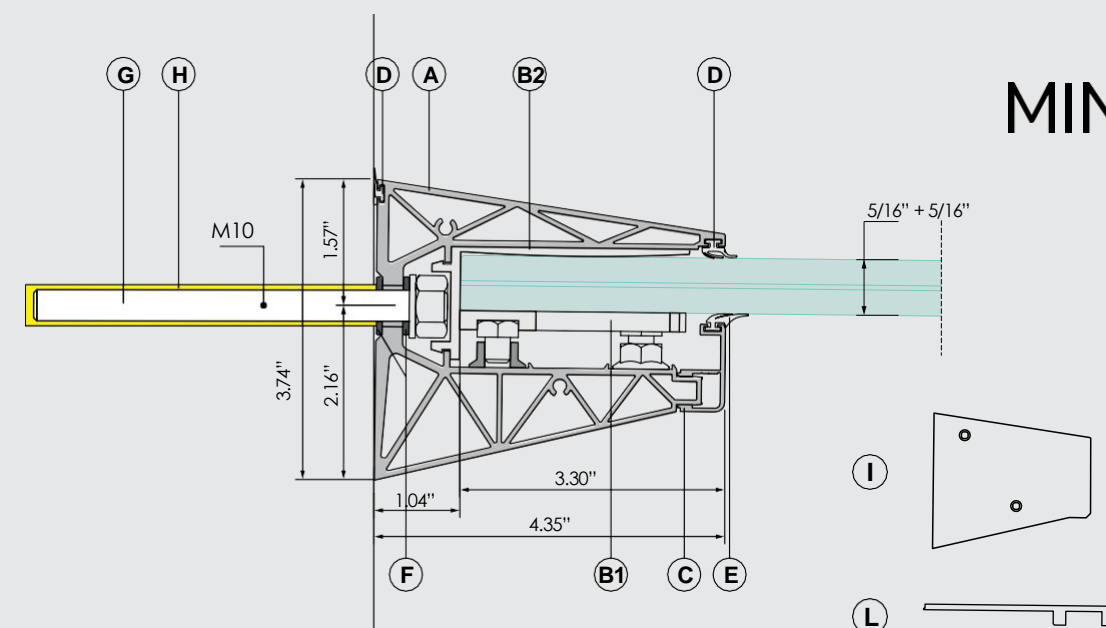
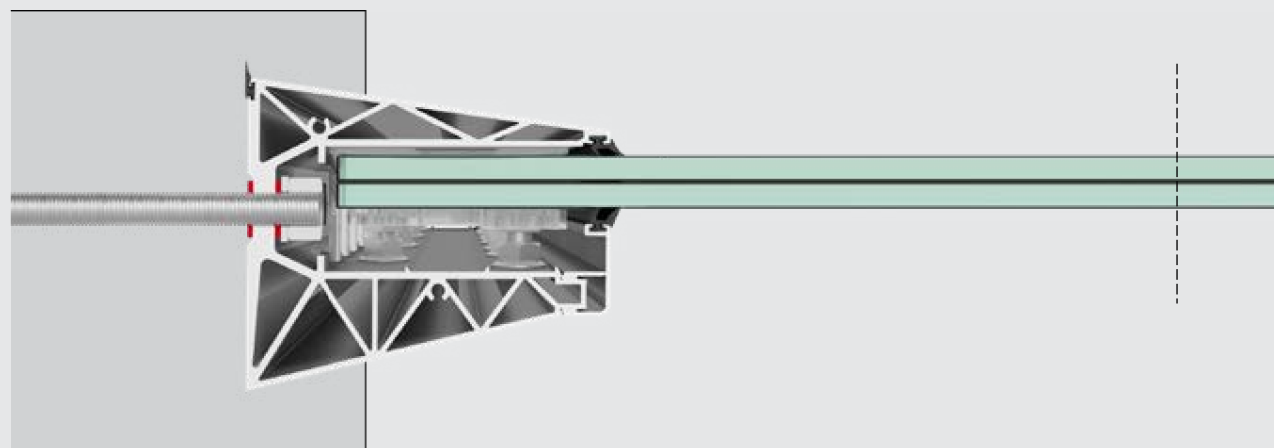
LINEa3

TECHNICAL DETAILS

The Linea 3 canopy is an architectural solution that combines innovation, safety and design.

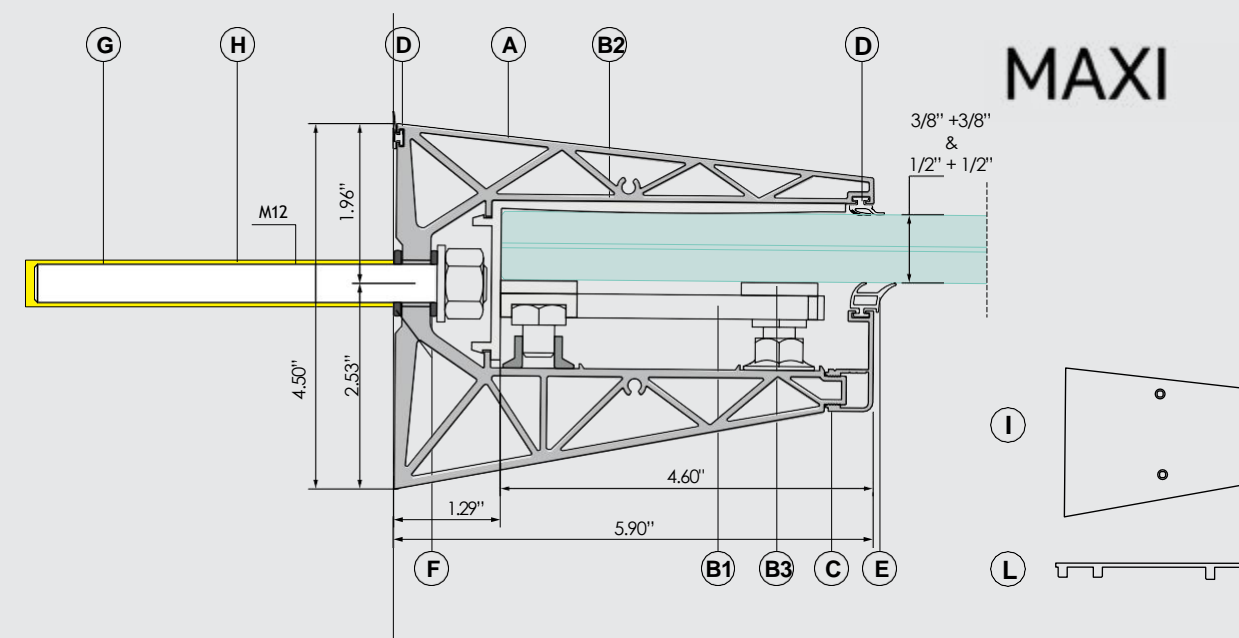
- **Structure:** Extruded aluminum profile, weather and corrosion resistant, ensuring durability and structural stability.
- **Profile finish:** 20 microns (0.79mil) anodizing (according to Qualanod certification) or RAL painting (according to Qualicoat Seaside certification)
- **Cover:** Tempered safety glass with polished edges for optimal safety.
- **Glass type:** Tempered SG laminated glass, thickness TBD. maximum projection 66 7/8".
- **Dimensions:** Unlimited length, maximum projection 66 7/8".

The Linea 3 canopy is ideal for house entrances, windows, shops, balconies, pedestrian walkways, waiting areas, etc; for rain and snow protection or as a sunshade (opaque or colored glass).



LIST OF COMPONENTS:

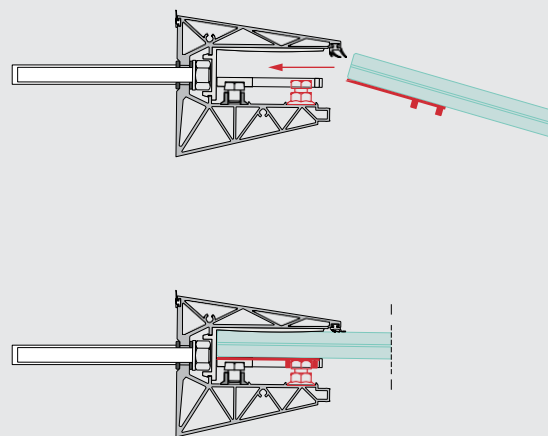
- A. Extruded aluminum profile.
- B. Set of accessories for adjustment & fastening of glass (4 pcs / 39 3/8").
 - B1. Adjustment screw (4 pcs / 39 3/8").
 - B2. Plastic accessory for glass installation. Compensating glass holder (4 pcs / 39 3/8").
 - B3. Plastic Plug (0.15" thickness), 2 pcs / 39 3/8" (MAXI addition only).
- C. Snap-fit cladding.
- D. Black TPV gasket, pre-inserted in profile.
- E. Black TPV gasket, pre-inserted in profile.
- F. Rubber washer for insulation between materials, 2 per fastening (within & behind extrusion)
- G. Stainless steel anchorage TBD based on adjoining structural condition (anchorage spacing not to exceed 7 7/8").
- H. Chemical anchor / anchorage adhesive / thread locker, TBD based on adjoining structural condition.
- I. Aluminum end caps.
- L. Anti Pull-Out accessory with 3M adhesive.



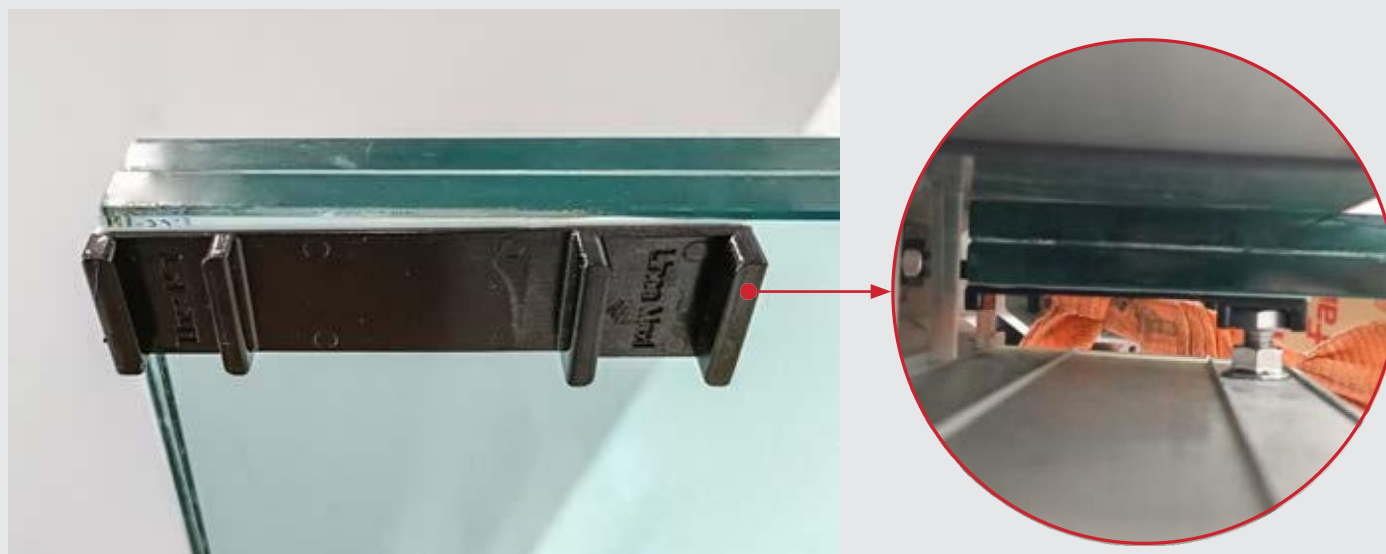
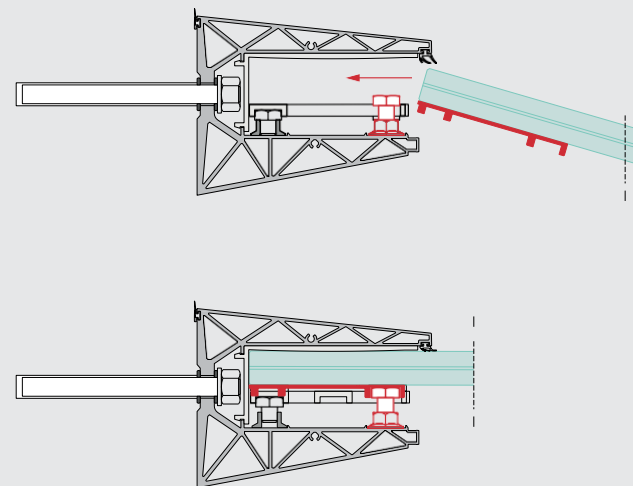
ANTI PULL-OUT SYSTEM FOR GLASS MODULES

Anti Pull-Out accessory bonded with 3M adhesive designed for secure fastening of glass.

**ACCESSORY A1
LINEA MINI**

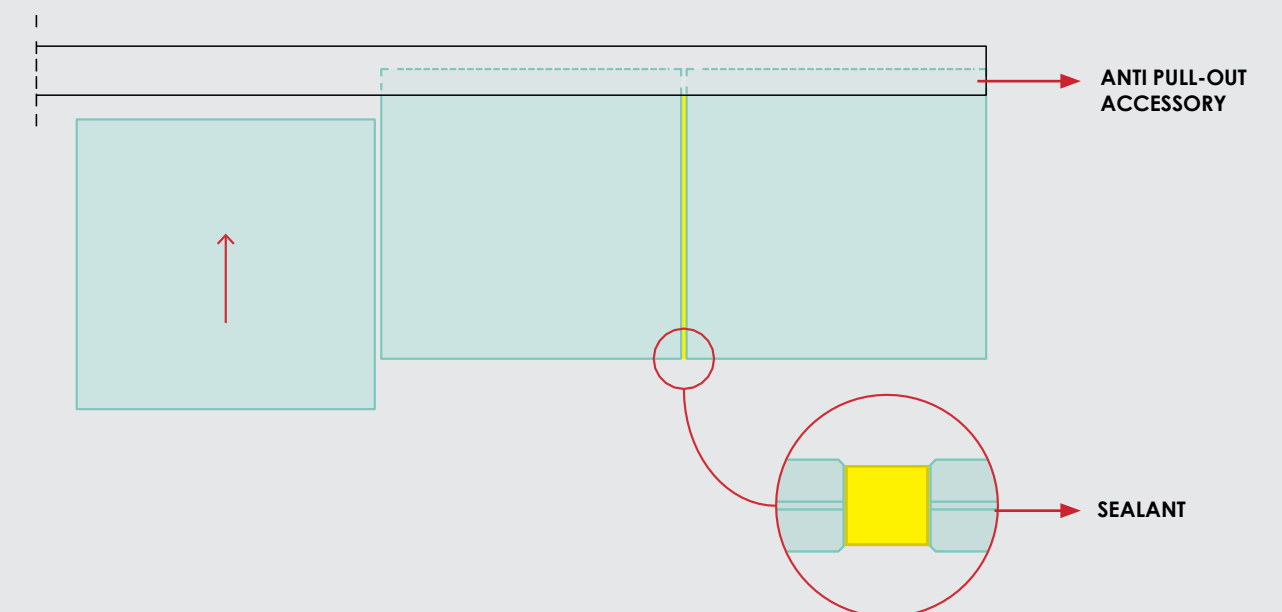
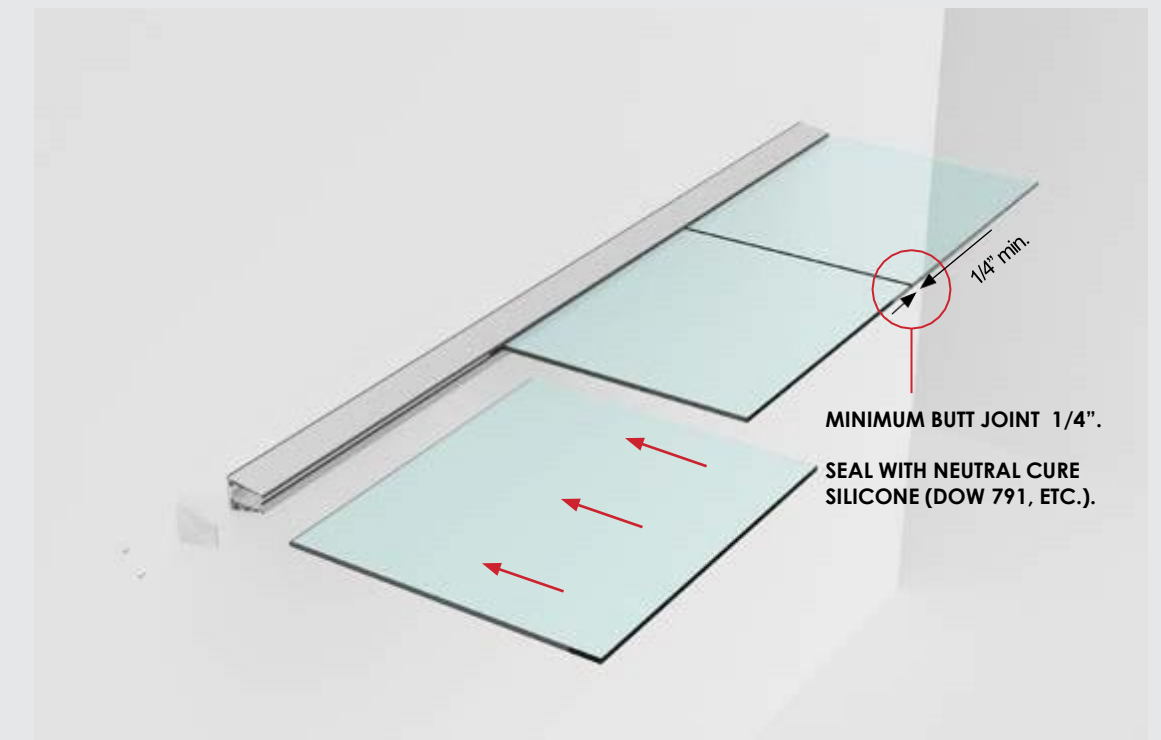


**ACCESSORY A2
LINEA MAXI**



GLASS MODULE APPROACH

Linea canopy models have no length limits.

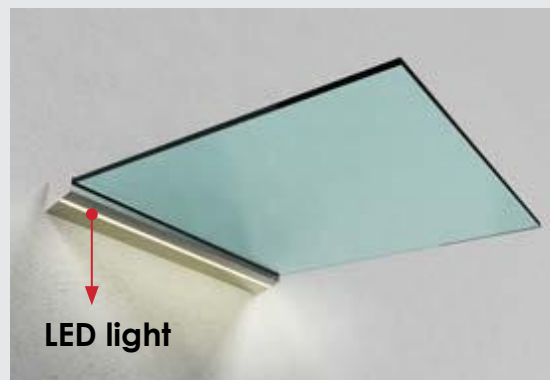


EXTERNAL LIGHTNING LED OPTION

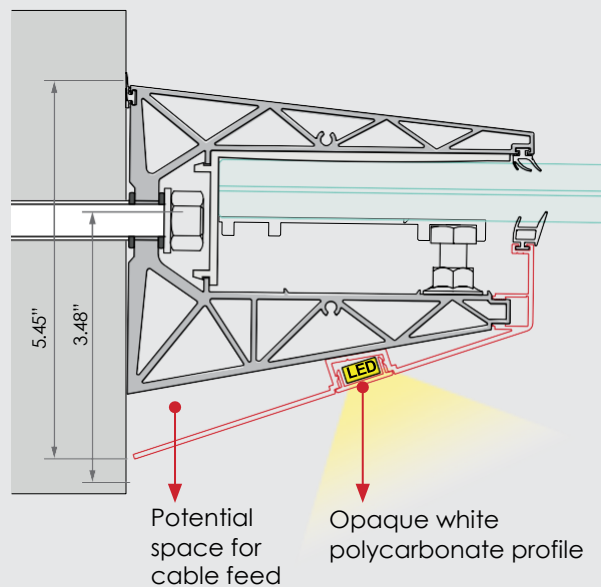
Linea Maxi LED, is the ideal outdoor canopy solution to protect and illuminate doors, Windows & entrances.

The system is designed to provide uniform and continuous lighting in the lower part of the canopy.

The combination of durable materials and advanced lighting technology ensures an optimal roofing solution that enhances outdoor spaces while providing protection and elegance.



LEDs supplied by others



faraone[®]

Faraone SRL a Socio Unico
Via Po, 12 - 64018 Tortoreto (TE)
Telefono +39 0861 784200
faraone@faraone.it
www.faraone.it

 **PHOENIX**
ARCHITECTURAL
EXCLUSIVE N. AMERICA PARTNER

Phoenix Architectural Glass + Metal, LLC
4235 Federal Hwy, Miami, FL 33137
Phone +1 305 753 4708
info@phx.glass
www.phx.glass